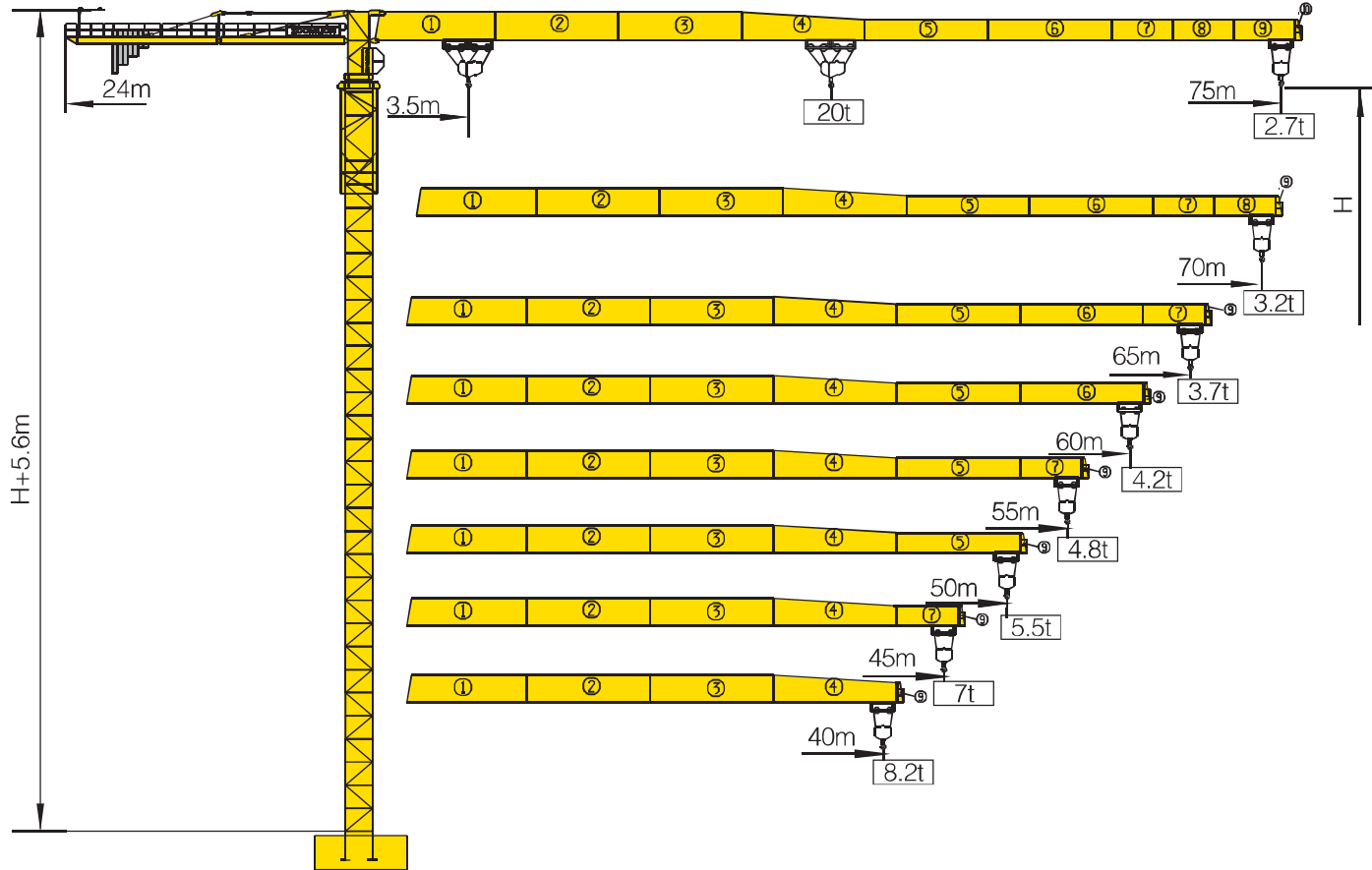


TCT7527-20



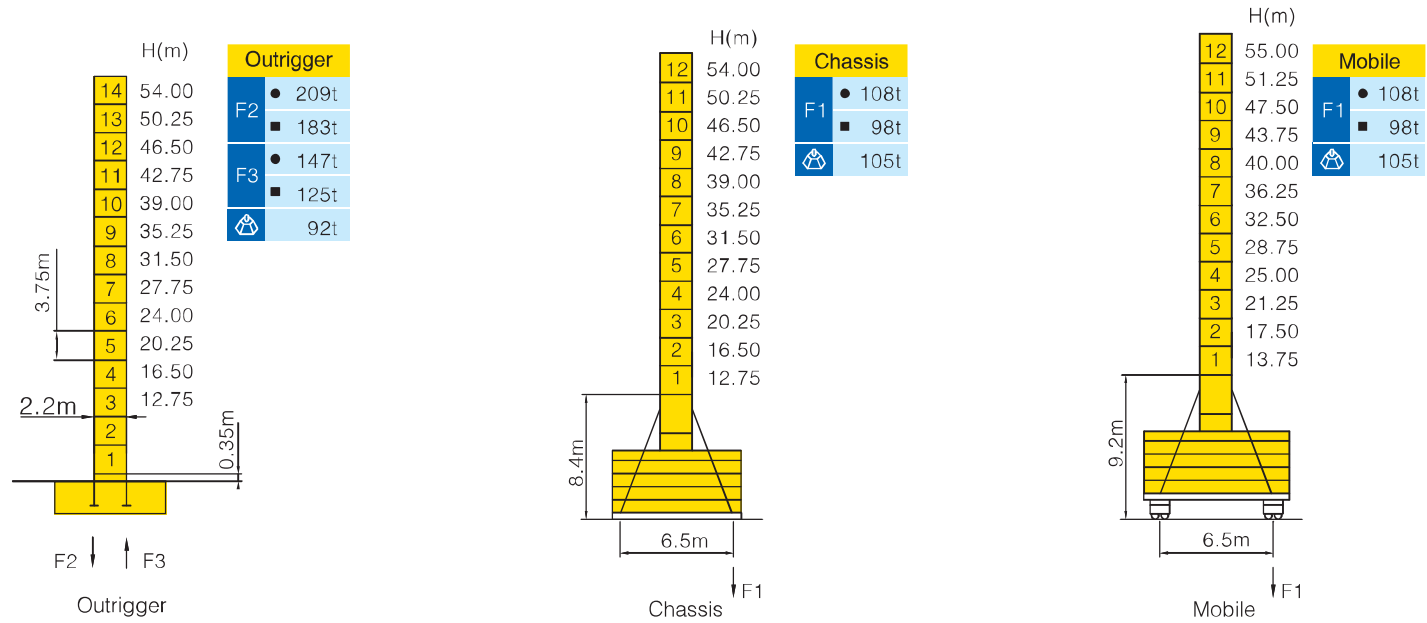
Counter-jib ballast

			(Kg)	PHZ4000	PHZ3000	PHZ2000
75m	24m	24000	4	2	1	
70m	24m	22000	3	2	2	
65m	24m	20000	3	2	1	
60m	24m	18000	3	2	0	
55m	24m	16000	2	2	1	
50m	24m	14000	2	2	0	
45m	24m	12000	1	2	1	
40m	24m	11000	2	1	0	

Working Height(m) @ Wall-tie Location(m)

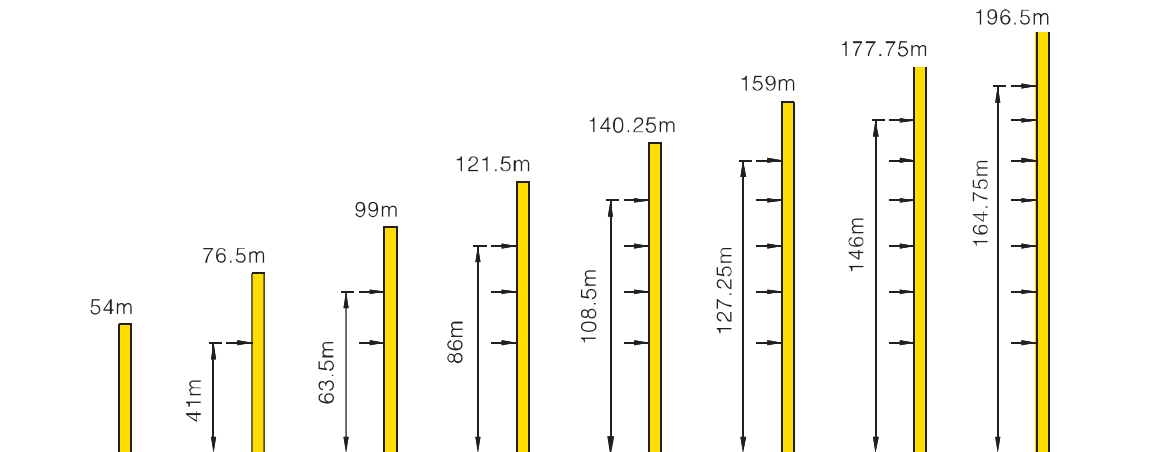
Model Detail	Mast Code	Wall-tie #1	Wall-tie #2	Wall-tie #3	Wall-tie #4	Wall-tie #5	Wall-tie #6	Wall-tie #7
TCT7527-20	HQ1-C	76.5 @ 41	99 @ 63.5	121.5 @ 86	140.25 @ 108.5	159 @ 127.25	177.75 @ 146	196.5 @ 164.75

Masts Reactions



● Reactions in service ■ Reactions out of service
 ⊕ Without load and ballast with longest jib and maximum height
 ⊕ For more erecting solutions, consult us!







Anchorage



Load diagrams

		Max.Capacity m/t	20.0	25.0	30.0	35.0	38.0	40.0	45.0	50.0	53.0	55.0	60.0	65.0	70.0	75.0
75m (R=76.5)	10t	3.5—26.9m	10.0		8.80	7.33	6.63	6.23	5.38	4.70	4.36	4.16	3.70	3.31	2.98	2.70
	20t	3.5—14.2m	13.16	9.96	7.87	6.39	5.69	5.29	4.44	3.77	3.43	3.22	2.76	2.38	2.05	1.76
70m (R=71.5)	10t	3.5—28.1m	10.0		9.26	7.73	7.01	6.59	5.70	5.00	4.64	4.42	3.95	3.54	3.20	
	20t	3.5—14.6m	13.79	10.49	8.33	6.79	6.07	5.65	4.76	4.06	3.70	3.48	3.01	2.61	2.26	
65m (R=66.5)	10t	3.5—29.0m	10.0		9.60	8.02	7.28	6.84	5.93	5.20	4.83	4.61	4.12	3.70		
	20t	3.5—15.1m	14.31	10.90	8.67	7.08	6.34	5.90	4.99	4.26	3.89	3.67	3.18	2.76		
60m (R=61.5)	10t	3.5—29.4m	10.0		9.78	8.17	7.41	6.97	6.04	5.30	4.93	4.70	4.20			
	20t	3.5—15.3m	14.57	11.11	8.84	7.23	6.47	6.03	5.10	4.36	3.99	3.76	3.26			
55m (R=56.5)	10t	3.5—29.9m	10.0		9.96	8.32	7.55	7.10	6.16	5.41	5.03	4.80				
	20t	3.5—15.5m	14.85	11.33	9.02	7.38	6.62	6.16	5.22	4.47	4.09	3.86				
50m (R=51.5)	10t	3.5—30.3m	10.0			8.45	7.67	7.22	6.26	5.50						
	20t	3.5—15.7m	15.07	11.51	9.17	7.51	6.73	6.28	5.32	4.56						
45m (R=46.5)	10t	3.5—33.2m	10.0			9.40	8.55	8.05	7.00							
	20t	3.5—17.2m	16.77	12.86	10.29	8.47	7.61	7.11	6.06							
40m (R=41.5)	10t	3.5—33.7m	10.0			9.58	8.71	8.20								
	20t	3.5—17.5m	17.08	13.10	10.49	8.64	7.77	7.26								

Mechanisms

		Hoisting QP20100A				
	Slewing	HPW75.130				
	0 ~ 0.6 r/min	3 × 7.5 kW				
	Trolleying	BP110A				
	0 ~ 100 m/min	11 kW				
	Travelling	ZAH52A-D ZCH52A-D				
	0 ~ 25m/min	4 × 5.2 kW				
		 75 kW  620m ⊕ (5 layers) ⊕ Consult us If overtop	V	⊂	3t	100 m/min
				⊂⊂	6t	50 m/min
			IV	⊂	5t	80 m/min
				⊂⊂	10t	40 m/min
			III	⊂	10t	40 m/min
				⊂⊂	20t	20m/min
		380V(+10%–10%) 50Hz		108.5+4 × 5.2 kW		

For more mechanisms optional, consult us!